

EMI/EMC FILTER

IM SERIES



Features

- Ideally suited for products that must conform to part 15, FCC regulations
- Plastic cased miniature type with high performance
- Meet over voltage category II of IEC 60664 and comply with IEC 60950
- Uses IEC connector that meets the safety standards from certification bodies
- PCB mounting type for small space and economical installation
- Short length and under tab for small space

Applications

- Digital equipments
- Personal computers and peripherals
- Measuring instruments
- For use in miniature equipments
- For monitors and display units

Specifications

MODEL	Rated Voltage (AC, DC)	Rated Current	Leakage Current (250V AC)	Operating Temperature
IM-(N)01**-*	250V	1A	-	-25°C to +85°C Including temperature rise Derating Curve
IM-(N)02**-*	250V	2A	-	
IM-(N/L)03**-*	250V	3A	-	
IM-(N)06**-*	250V	6A	-	
IM-(N/L)***O-*	-	-	0.01mA max.	
IM-(N/L)***C-*	-	-	0.075mA max.	
IM-(N/L)***D-*	-	-	0.10mA max.	
IM-(N/L)***2-*	-	-	0.35mA max.	
IM-(N/L)***3-*	-	-	0.50mA max.	

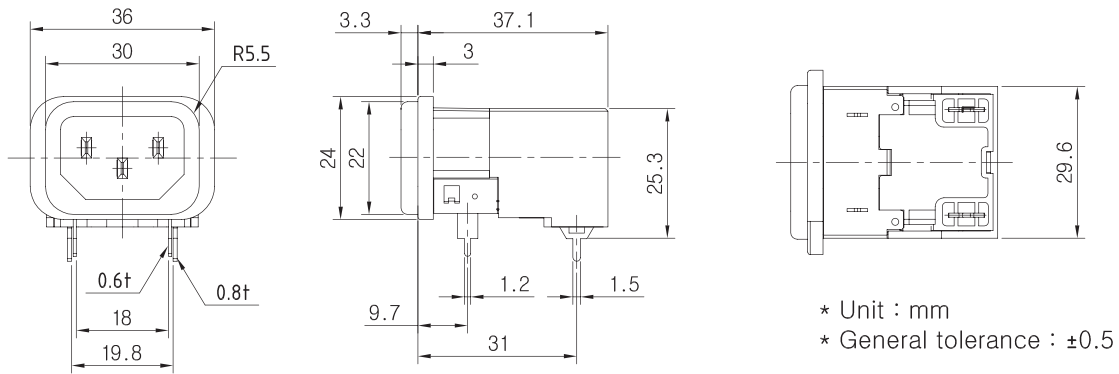
Note

Test Voltage : 1500V AC one minute, line to earth
 Insulation Resistance : 300 Mohm min. at 500V DC
 Voltage Drop : 1V max. at rated current
 Weight : 30g
 Inlet : Compatible with IEC-60320

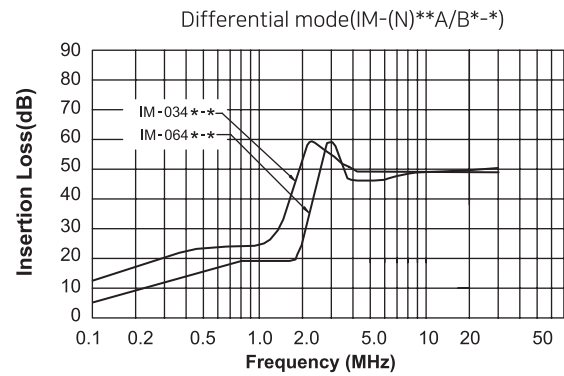
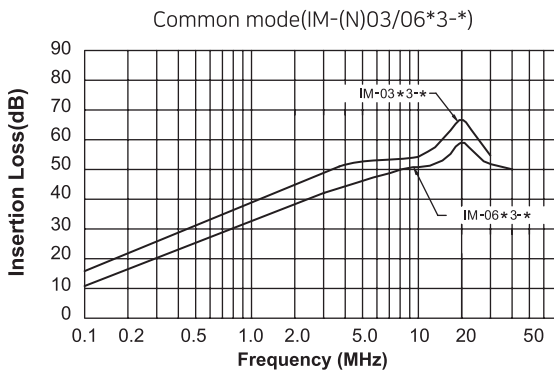
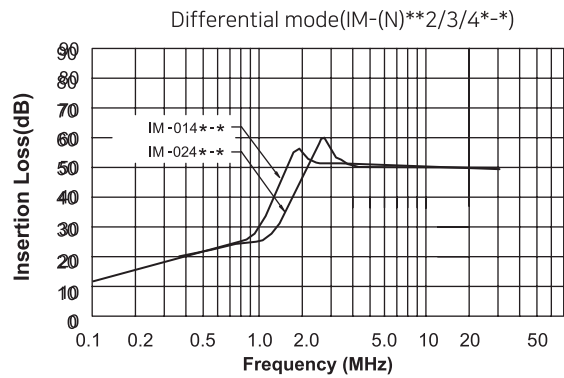
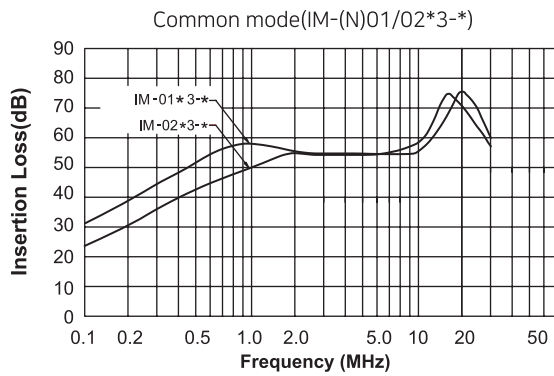
Model Number Construction

I	M	03	4	2	P
Input Connector I : IEC Connector	Special Design M : PCB mounting/ Plastic Case	Current Rating : AC rms 01,N01 : 1amp 02,N02 : 2amp 03,N03,L03 : 3amp 06,N06 : 6amp ("L", "N" high performance)	Line-Line Cap.Value 2 : 0.022 µF 4 : 0.047 µF A : 0.1 µF B : 0.15 µF	Line-Gnd Cap.Value 2 : 2200 pF 3 : 3300 pF C : 330 pF D : 470 pF 0 : None	Output Terminal P : PCB Pin

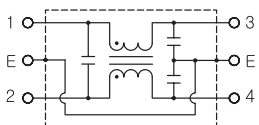
Shapes and Dimensions



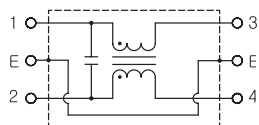
Attenuation Characteristics



Circuit Diagram

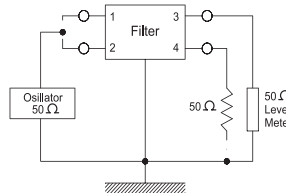


IM-****-* type

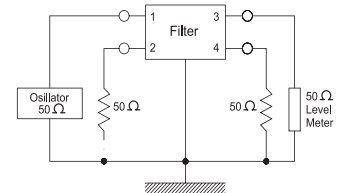


IM-***0-* type

Measurement Configuration



Common mode



Differential mode